

Edge Protection Seal Profiles

Material NBR, FDA Compliant

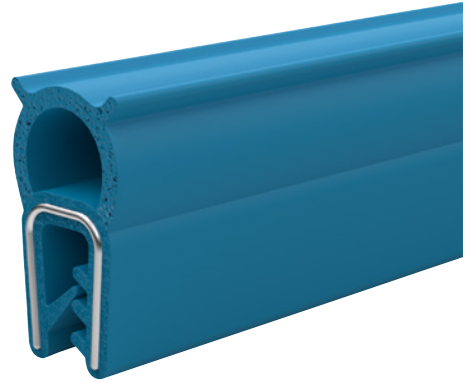
SPECIFICATION

Types

- Type **A**: Upper seal profile
 - Type **D**: Side seal profile
- Clamping profile / seal profile
Acrylonitrile butadiene rubber **NBR**
- FDA compliant
 - Blue, RAL 5012
 - Clamping profile hardness 70±5 Shore A
 - Seal profile hardness 30±5 Shore A
 - Temperature resistant from -30 °C to 100 °C

Clamping insert

Stainless steel wire polyester clamping band
AISI 304



INFORMATION

Edge protection seal profiles GN 2190 can be used to seal doors, covers and hatches. The profiles can be pushed onto the edges of metal sheets and plates by hand. The embedded clamping insert prevents it from detaching. Glue or other adhesives are not required.

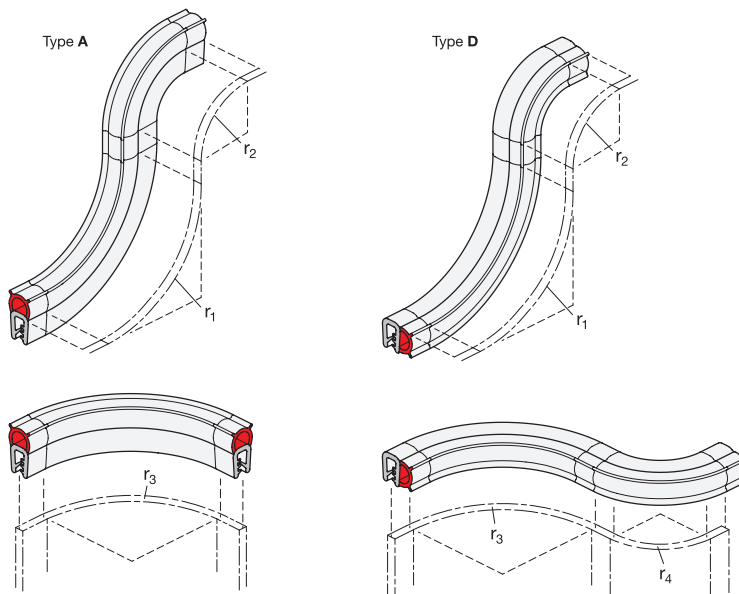
Thanks to the use of FDA compliant materials, the profiles are suitable for applications with corresponding requirements. The profiles made of NBR are particularly suited for applications where they may come into contact with oils, greases, or similar fluids.

When installed, the profile should be compressed slightly by the adjacent components according to measurement w_2 . This ensures an optimal seal. It is recommended to adhere to the placement radii ($r_1... r_4$) guidelines in order to ensure a tight and long lasting profile seal and to make assembly easier.

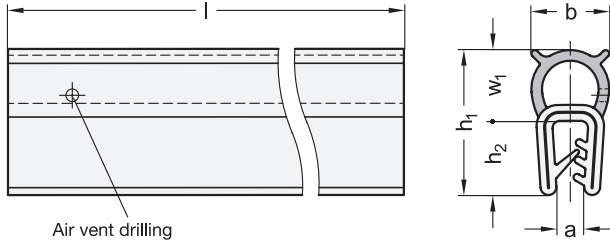
The seal profiles have venting holes on one side for production-related reasons (at a distance of about 2 m), which should be taken into account for design and installation.

TECHNICAL INFORMATION

- Elastomer Characteristics (see page A32)
- Stainless Steel Characteristics (see page A26)

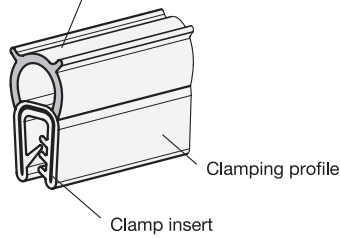


Type A



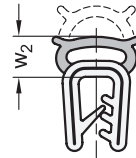
Air vent drilling

Upper seal profile

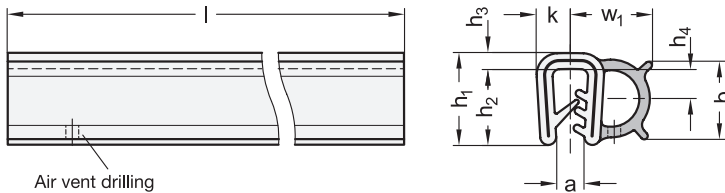


Clamping profile

Clamp insert

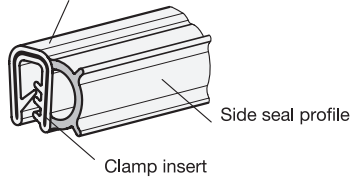


Type D



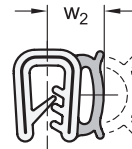
Air vent drilling

Clamping profile



Side seal profile

Clamp insert



GN 2190-A

Description	h1	Length l in m	a	b	h2	r1	r2	r3	w1	w2 At 50% of the permissible deformation	⚖
GN 2190-NBR-20.5-A-20	20.5	20	1 - 3.5	11	10.5	90	50	30	10	7	3200

GN 2190-D

Description	h1	Length l in m	a	b	h2	h3	h4	k	r1	r2	r3	r4	w1	w2 At 50% of the permissible deformation	⚖
GN 2190-NBR-13-D-20	13	20	1 - 3.5	11	10.75	2.25	4.5	4.75	40	50	100	80	11.25	8.75	3200

