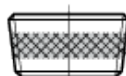
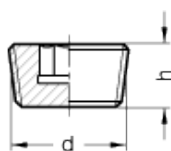


DIN 906-NI

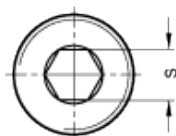
Threaded plugs



INOX
Stainless Steel



Pressure tightness with
thread coating **GPC**
(Precote 5)



technical informations

Material

AISI 303 Stainless Steel.

Standard versions available

- Version A: without micro encapsulation.
- Version GPC: with micro encapsulation.

Special executions on request

Threaded plugs DIN 906-NI in AISI 303 stainless steel.

Features and applications

Threaded plugs DIN 906 are used to close bore holes with cylindrical internal thread. The tightness depends on the medium, pressure, temperature and material pairing. The design with GPC thread coating provides a higher degree of safety. The official DIN 906 standard sheet also provides for thread sizes M39x2; M52x1.5; M52x2; M56x2 and M60x2.

Standard Elements	Main dimensions			Weight
Description	d	h	s	g
DIN 906-NI-M8x1-A	M8x1	8	4	2

DIN 906-NI-M10x1-A	M10x1	8	5	3
DIN 906-NI-M12x1.5-A	M12x1.5	10	6	6
DIN 906-NI-M14x1.5-A	M14x1.5	10	7	8
DIN 906-NI-M16x1.5-A	M16x1.5	10	8	10
DIN 906-NI-M18x1.5-A	M18x1.5	10	8	14
DIN 906-NI-M20x1.5-A	M20x1.5	10	10	17
DIN 906-NI-M22x1.5-A	M22x1.5	10	10	22
DIN 906-NI-M24x1.5-A	M24x1.5	12	12	30
DIN 906-NI-R1/8-A	R1/8	8	5	3
DIN 906-NI-R1/4-A	R1/4	10	7	7
DIN 906-NI-R3/8-A	R3/8	10	8	12
DIN 906-NI-R1/2-A	R1/2	10	10	19
DIN 906-NI-R3/4-A	R3/4	12	12	37
DIN 906-NI-R1-A	R1	12	17	57
DIN 906-NI-M8x1-GPC	M8x1	8	4	2
DIN 906-NI-M10x1-GPC	M10x1	8	5	3
DIN 906-NI-M12x1.5-GPC	M12x1.5	10	6	6
DIN 906-NI-M14x1.5-GPC	M14x1.5	10	7	8
DIN 906-NI-M16x1.5-GPC	M16x1.5	10	8	10
DIN 906-NI-M18x1.5-GPC	M18x1.5	10	8	15
DIN 906-NI-M20x1.5-GPC	M20x1.5	10	10	17
DIN 906-NI-M22x1.5-GPC	M22x1.5	10	10	22
DIN 906-NI-M24x1.5-GPC	M24x1.5	12	12	30



ELESA and GANTER models all rights reserved in accordance with the law. Always mention the source when reproducing our drawings.

STANDARD MACHINE ELEMENTS WORLDWIDE