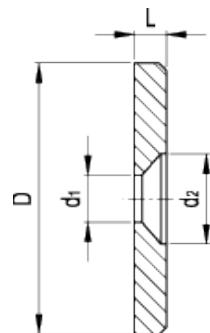


GN 184.5

Washers for countersunk head screws



technical informations

Material

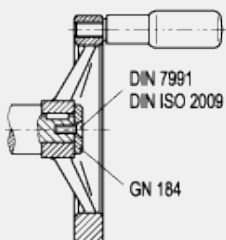
AISI 303 stainless steel, sandblasted matte finish.

Features and applications

GN 184.5 washers are generally used on shafts to fit handwheels.

AISI 303 stainless steel, thanks to its high resistance to corrosion, allows the application of these washers on machines and equipment in those sectors where laws or particular hygienic, climatic and environmental factors make it mandatory to use corrosion resistant materials.

Application example



Standard Elements	Main dimensions				Countersunk screws DIN 7991 DIN ISO 2009	Weight
Description	D	L	d ₁	d ₂		g

GN 184.5-16	16	3	4.3	8	M4	4
GN 184.5-20	20	3	4.3	8	M4	6
GN 184.5-22	22	3.5	5.3	10	M5	9
GN 184.5-25	25	3.5	5.3	10	M5	12
GN 184.5-28	28	3.5	5.3	10	M5	15
GN 184.5-32	32	4	6.4	12	M6	21
GN 184.5-36	36	4	6.4	12	M6	30
GN 184.5-40	40	5	6.4	12	M6	45
GN 184.5-45	45	6	6.4	12	M6	70
GN 184.5-52	52	6	6.4	12	M6	94



ELESA and GANTER models all rights reserved in accordance with the law. Always mention the source when reproducing our drawings.

STANDARD MACHINE ELEMENTS WORLDWIDE